

# SUSTAINABLE FACADES

**CLADISHIELD SYSTEM**  
(Rainscreen System)

**CLADICAST SYSTEM**  
(Precast Wall System)

**CLADIFAB SYSTEM**  
(Prefab Wall System)

**MITREX**  
BUILDING-INTEGRATED SOLAR TECHNOLOGY

**Cladify**  
Smart Cladding Solutions

# AQUABELLA

118 Merchants' Wharf, Toronto, Ontario, Canada

Aquabella is the third phase of Tridel and Hines' condominium community at Bayside on the Toronto Waterfront. Designed by Danish architect 3XN, the building is 12 storeys tall and has 173 units. **We cut overall installation time in half by proposing a pre-panelized system that simulates an intricate mosaic design while minimizing the costs associated with transportation, installation, etc.** All corners and panel profiles were pre-fabricated and pre-assembled in our Toronto-based factory.



BIANCO BEIGE  
Porcelain



CLOSIUM CREAM  
Porcelain



PUNTI MARRONI  
Porcelain



PURE WHITE  
Porcelain

ARCHITECT:  
**3XN, Kirkor Architects and Planners**  
DEVELOPER:  
**Tridel, Hines**  
BUILDING TYPE:  
**Residential /Retail Building**  
PROJECT SIZE:  
**160,000 SQFT**



# AURA CONDOS

386 Yonge Street, Toronto, Ontario, Canada

Aura Condos stands at a dizzying 78 storeys with 995 units. It was designed by Graziani + Corazza and is the tallest condo tower in Canada. At this height, heavy stone or precast concrete cladding were not a satisfactory option. Our **lightweight cladding solution, supplied via OSI, was directly integrated into the curtain wall, simplifying the installation and reducing its time by 25%** compared to traditional cladding and overcoming the limitations of dimensional stone.

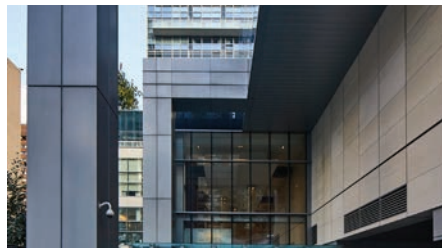


**CUSTOM COLOR**  
Coated Aluminum



**PORTUGUESE LIMESTONE**  
Natural Stone

ARCHITECT:  
**Graziani + Corazza Architects Inc.**  
DEVELOPER:  
**Canderel Residential**  
BUILDING TYPE:  
**Residential / Retail Building**  
PROJECT SIZE:  
**35,000 SQFT**





# ONE RAINSFORD

1 Rainsford Road, Toronto, Ontario, Canada

The stylish One Rainsford condo building in the Toronto Beaches is 6 storeys tall and houses 28 single- or two-storey residences. Elegance was important to architect Richard Ziegler. **Our lightweight limestone cladding, supplied via OSI, provided a cost-effective way to fulfill his vision.** Our cladding resembles dimensional stone because of its pre-assembled corners. The corners give the appearance of a building clad in large, luxurious stone blocks.



**MOCHA CREAM**  
Natural Stone

ARCHITECT:  
**Richard Ziegler Architects**  
DEVELOPER:  
**The Riedel Group**  
BUILDING TYPE:  
**Residential /Retail Building**





# MONTGOMERY SQUARE

2384 Yonge Street, Toronto, Ontario, Canada

The iconic post office in the Yonge and Eglinton area was transformed into the 27-storey Montgomery Square building, featuring 233 units. **We pre-assembled corners and panel profiles, which reduced installation times. Our lightweight cladding was integrated into the window wall and the soffits to match the historic building at the podium.** We also provided a rainscreen system with thermally broken cladding brackets to improve building insulation and waterproofing.

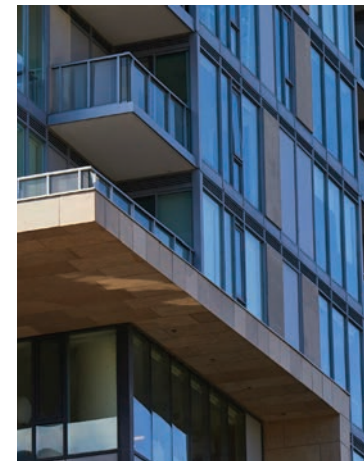
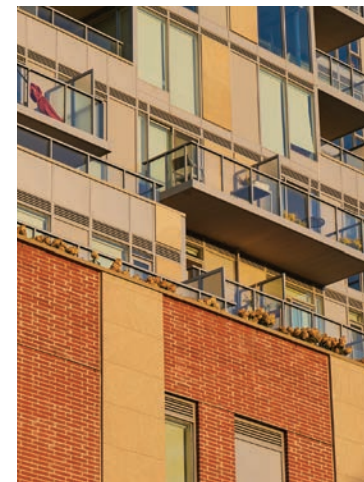


INDIANA LIMESTONE  
Natural Stone



CUSTOM COLOR  
Coated Aluminum

ARCHITECT:  
**RAW Design, ERA Architects**  
DEVELOPER:  
**Rockport Group, Woodbourne  
Canada Management, Inc.**  
BUILDING TYPE:  
**Residential / Retail Building**  
PROJECT SIZE:  
**30,000 SQFT**



# 357 KING WEST

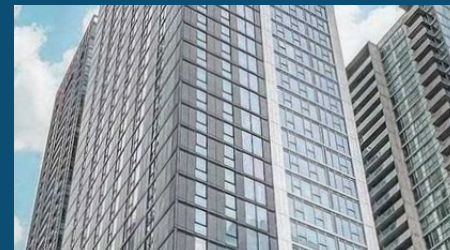
357 King Street West, Toronto, Ontario, Canada

357 King West is a new 42-storey, 324-unit condo building on the edge of Toronto's Entertainment District. Developed by Great Gulf, it features rooftop terraces and outdoor lounges. **Our sleek, lightweight cladding system, supplied in Black Stone, made installation easy. We significantly reduced installation time by pre-assembling all corners at our factory in Toronto.** We also provided a rainscreen system with thermally broken cladding brackets to improve building insulation and waterproofing.



**BLACK STONE**  
Natural Stone

ARCHITECT:  
**Quadrangle**  
DEVELOPER:  
**Great Gulf**  
BUILDING TYPE:  
**Residential /Retail Building**





# 200 CUMBERLAND ST

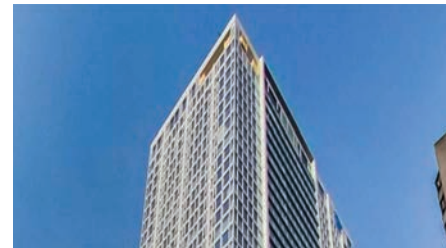
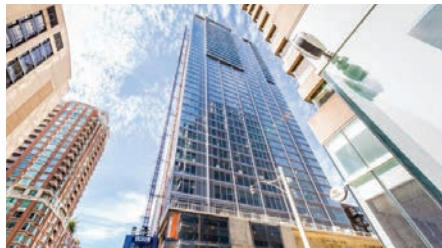
200 Cumberland Street, Toronto, Ontario, Canada

In the heart of the ritzy, pedestrian-friendly Yorkville neighborhood, the iconic corner of Cumberland Street and Avenue Road has been transformed into a multi-purpose, 40-storey, 255-unit work of art. We contributed to its beauty by supplying **lightweight Canadian Limestone cladding with pre-assembled corners that dramatically reduced installation time.** Because of how lightweight our products are, the building was able to use natural stone for its ceilings, and our backing technology allowed for a much bigger panel size than traditional stone.



CANADIAN ADAIR VEIN CUT  
Natural Stone

ARCHITECT:  
**WZMH Architects**  
DEVELOPER:  
**Camrost Felcorp**  
BUILDING TYPE:  
**Residential / Retail Building**





# RESIDENCES OF 488 UNIVERSITY AVENUE

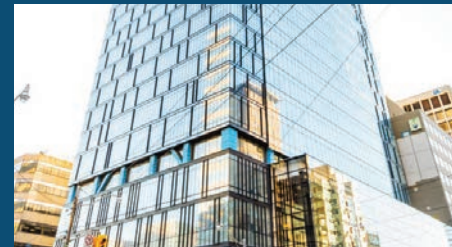
488 University Avenue, Toronto, Ontario, Canada

Rising high above Toronto's bustling University Avenue, the Residences of 488 University Avenue is a 55-storey building with 453 units. The original 18-storey office tower's lower floor has been transformed into a new podium with a beautiful tree motif with **lightweight granite cladding supplied via OSI**. The upper floors were re-clad, allowing for the curtain wall and window wall to be designed together seamlessly.



**NERO PEARLA**  
Granite

ARCHITECT:  
**Core Architects**  
DEVELOPER:  
**Amexon Development Corporation,  
Toddglen Group of Companies**  
BUILDING TYPE:  
**Residential / Office Building**



# AYC CONDOS

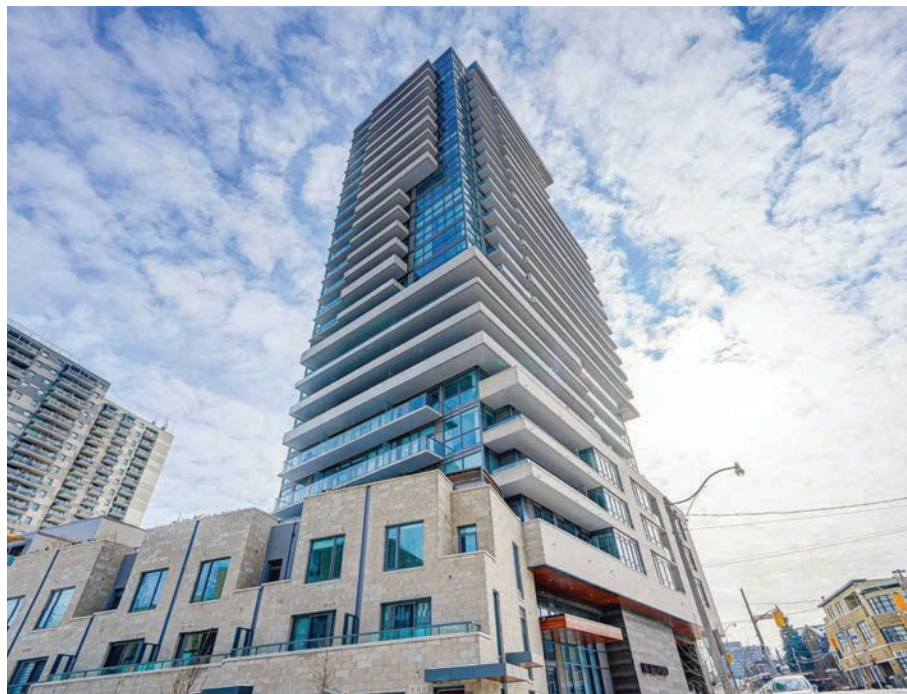
181 Bedford Road, Toronto, Ontario, Canada

Annex Yorkville Connection Condos, AYC Condos for short, is a chic high rise designed by TACT Architecture. It takes advantage of its position between the Yorkville and Annex neighborhoods, combining both trendy condo life and peaceful residential living into one. We provided **lightweight cladding that was pre-fabricated at our Toronto factory, which decreased installation times.** Thanks to our innovative backing technology, we were able to increase the panel size of the Eramosa vein-cut marble and upgrade the aesthetics of the building.



ERAMOSA  
Marble

ARCHITECT:  
**TACT Architecture**  
DEVELOPER:  
**Metropia, Diamond Corp**  
BUILDING TYPE:  
**Residential / Retail Building**





# E2 CONDOS AT EPLACE

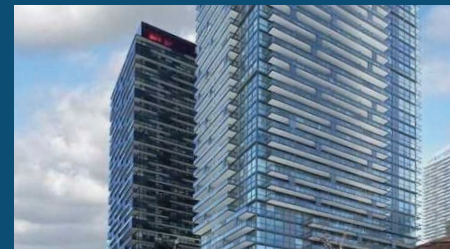
41 Roehampton Avenue, Toronto, Ontario, Canada

E2 Condos at Yonge and Eglinton is a 44-storey, 450-unit building that is perfectly situated for the future-planned Toronto Crosstown LTR. Given the design and layout of the building cladding, we proposed a **pre-panelized lightweight granite cladding solution to assemble smaller panels into bigger ones.** This increased the speed and quality of installation. We also provided a rainscreen system with thermally broken cladding brackets to improve building insulation and waterproofing.



NERO ASSOLUTO  
Granite

ARCHITECT:  
**TACT Architecture**  
DEVELOPER:  
**Capital Developments, Metropia**  
BUILDING TYPE:  
**Residential / Public Building**





# COLLABORATIVE HEALTH EDUCATION BUILDING (CHEB), Dalhousie University

Summer Street, Halifax, Nova Scotia, Canada

The 5-storey CHEB building was built to encourage collaboration and social interaction between students at Dalhousie University. Our beautiful, **lightweight, natural stone cladding increases the aesthetic value of the building.** By working with the architects, we also increased the energy efficiency of the building through our airtight enclosure.



**WALLACE CREEK**  
Natural Stone



**PERLATO EUROPA**  
Natural Stone

ARCHITECT:  
**Moriyama & Teshima Architects**  
DEVELOPER:  
**Dalhousie University**  
BUILDING TYPE:  
**Institutional Building**



# FLEUR CONDOS

60 Shuter Street, Toronto, Ontario, Canada

Fleur Condos is an architecturally interesting, elegant high rise just a stones-throw away from Ryerson University in Toronto. The 29-storey tower has 320 units and a ground floor for retail use. Menkes Developments wanted a limestone facade, and **our cladding solution allowed for a beautiful Indiana Limestone, supplied to AWD Windows, to be integrated directly into the curtain wall without the need for any complex supporting structures.**



INDIANA LIMESTONE  
Natural Stone

ARCHITECT:  
**Architects Alliance**  
DEVELOPER:  
**Menkes Developments**  
BUILDING TYPE:  
**Residential / Retail Building**



# RISE CONDOMINIUMS

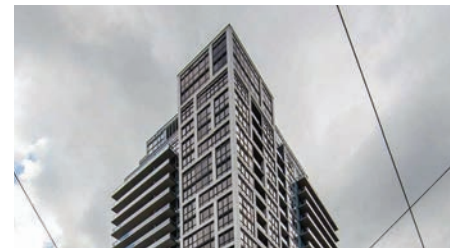
501 St Clair West, Toronto, Ontario, Canada

Near Toronto's famous Casa Loma, Rise Condominiums on Bathurst and St Clair West is a 21-storey building with 283 units. **We drastically reduced cladding installation time by pre-fabricating and assembling all panel profiles in our Toronto manufacturing facility.** Our system allowed for our Synthetic White lightweight cladding material to be integrated into the curtain wall system rapidly and easily.



**SYNTHETIC WHITE**  
Solid Color

ARCHITECT:  
**Graziana + Corazza Architects, Inc.**  
DEVELOPER:  
**Reserve Properties**  
BUILDING TYPE:  
**Residential Building**





# MITREX & CLADIFY HEADQUARTERS

41 Racine Rd. Toronto, Ontario, Canada

Mitrex Headquarters, located in Toronto, Canada, showcases Mitrex Solar Facade panels along the north elevation of the manufacturing facility. **The Solar Facade features fully white, 250W panels directly integrated into the fins of the building.** The integrated solar panels allow for seamless green energy generation.



**POLARIS**  
Solar Solid Colour



**BIANCO THASSOS**  
Porcelain

BUILDING TYPE:  
**Office Building**  
PROJECT SIZE:  
**Total: 20,000 SQFT**  
**Active: 6,000 SQFT**  
POWER OUTCOME:  
**60kW**



# MIDLAND COURTHOUSE

605 Yonge St, Midland, Ontario, Canada

Mitrex solar modules improved the aesthetics of the 605 Yonge St building while transforming the structure into a green, energy-generating power plant. The improved area on **the building utilizes Mitrex Solar Facades with a wood pattern spanning over 10,000SQFT and generating energy with a system size of over 160kW**. The structure features an improved building envelope while seamlessly generating solar energy.



**NOCCIOLA**  
Solar Wood



**CUSTOM COLOR**  
Solar Solid Color



BUILDING TYPE:  
**Governmental Building**  
PROJECT SIZE:  
**10,000 SQFT**  
POWER OUTCOME:  
**160kW**



# ST. PHILOPATEER ORTHODOX CHURCH

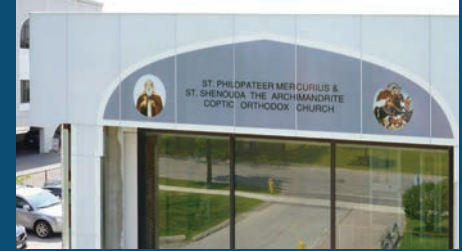
139 Bond Avenue, Toronto, Ontario, Canada

139 Bond Avenue, located in Toronto, Canada **features a church with a 10,000SQFT retrofitted facade of both solar (75kW system) and non-solar areas.** The building envelope boasts religious iconography that generates energy through solar technology integrated into the cladding. The 50-year-old structure was transformed into an energy-generating power plant with an aesthetically-improved exterior. Further, the prefab wall system made installation quick, reduced costs, and had minimal on-site disturbance.



CUSTOM DESIGN  
Solar Solid Color

BUILDING TYPE:  
**Religious Building**  
PROJECT SIZE:  
**10,000 SQFT**  
POWER OUTCOME:  
**75kW**





# THE SEE INSTITUTE, DUBAI

The Sustainable City - Dubai - United Arab Emirates

The SEE Institute is part of The Sustainable City in Dubai, an award-winning community that aims to become the first Net Zero Energy development in the region. **The building integrates Mitrex Solar Facade on the South and South-West facade.** The institute is the research and development arm of Diamond Developers which promotes low carbon living and accelerates climate action through professional training, public education, events and special projects.



**CUSTOM DESIGN**  
Solar Metal



**POLARIS**  
Solar Solid Color

DEVELOPER:  
**Diamond Developers**  
BUILDING TYPE:  
**Institutional Building**  
PROJECT SIZE:  
**1,500 SQFT**  
POWER OUTCOME:  
**14kW**



# THE SHOPS AT LANSDOWNE PARK

1015 Bank Street, Ottawa, Ontario, Canada

The redevelopment encapsulated 360,000 SQFT of mixed-use commercial space, residential townhouses, and condos. **To lower installation time, all corners and panel returns are prefabricated and assembled in the shop.**

We also made it look like dimensional stone is used in the design instead of cladding panels. Another advantage of using the Cladify system is the ability to combine multiple facing materials with one universal system. This project has four different materials and textures supplied via OSI; we provided the possibility of using one system with varying facings maintaining the same thickness of the panels.

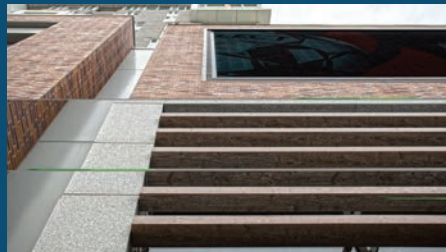


WALLACE CREEK  
Natural Stone



ABERDEEN  
Brick

ARCHITECT:  
**Petroff Partnership Architects**  
DEVELOPER:  
**Trinity Development Group**  
BUILDING TYPE:  
**Commercial Building**





# BEANFIELD CENTRE-HOTEL X PEDESTRIAN BRIDGE

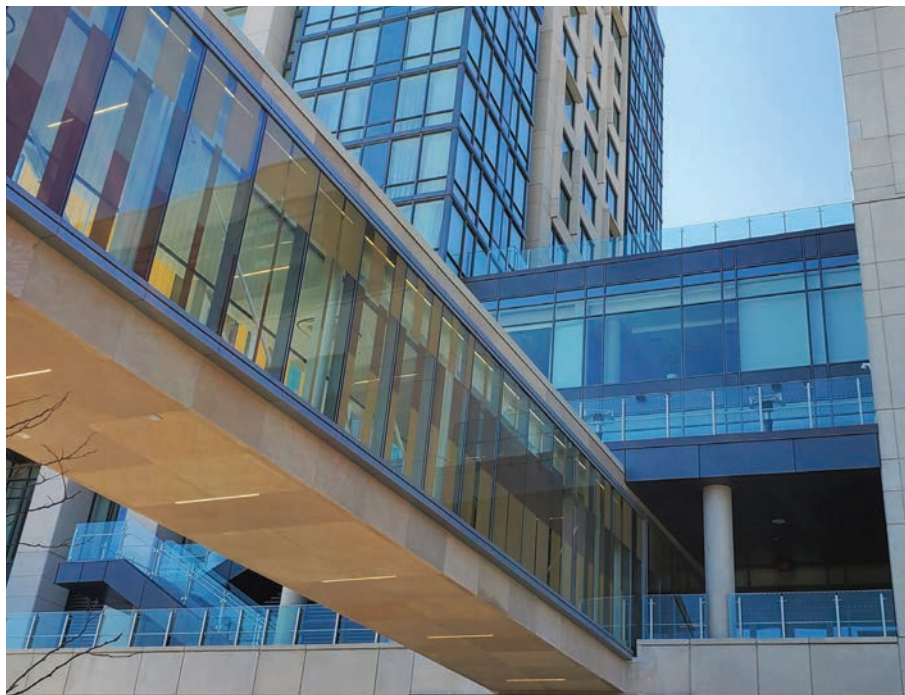
111 Princess Blvd & 2 Strachan Ave., Toronto, Ontario, Canada

Exhibition Place, Canada's largest entertainment and business events venue, aimed to connect its historic convention facility with a new luxury hotel. They wanted to create a seamless pathway between the two structures that would blend well with the existing buildings. To achieve this, they constructed an elevated walkway using a steel truss framework and floor-to-ceiling insulated glass. **The walkway's exterior cladding and soffits featured Cladify panels with natural Indiana limestone, providing a visually cohesive link while keeping it lightweight and unobtrusive.**



INDIANA LIMESTONE  
Natural Stone

ARCHITECT:  
**NORR Architects & Engineers Limited**  
DEVELOPER:  
**Exhibition Place, The Library Hotel  
Collection**  
BUILDING TYPE:  
**Architectural Feature**



# SOLAR BRICK FACADE

This project features an installation of Mitrex Solar Brick made to match the existing brick facade on the post-war era building. **Mitrex Solar Brick facades boast up to 330W per panel while recreating a traditional masonry brick look**, a staple of buildings in North America. The installation features a 59kW system size spanning over 4,000SQFT. Incorporating Solar Brick into the facade allowed the building owner to have an energy-generating building envelope without poor aesthetics.



RUBRICA  
Solar Brick



BUILDING TYPE:  
**Office Building**  
PROJECT SIZE:  
**4,000 SQFT**  
POWER OUTCOME:  
**59kW**



# 1247 38TH STREET

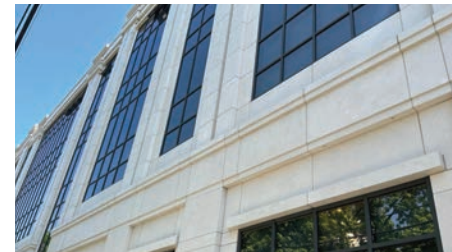
1247 38th Street, Brooklyn, New York, USA

The architecture of 1247 38th Street showcases a blend of traditional and modern elements. Its facade stands out with an innovative lightweight system that combines aesthetics and functionality. **The facade design incorporates Cladify lightweight preassembled panels featuring the exquisite Mocha Cream Natural Portuguese Limestone facing, enhancing its unique qualities.** By utilizing the preassembled panel system, the installation process is streamlined, ensuring efficiency and speed. Moreover, this system significantly improves the thermal properties of the building envelope by seamlessly integrating insulation. The overall design aims to replicate the timeless beauty of traditional stone applications while incorporating cutting-edge technologies of today.



MOCHA CREAM  
Natural Stone

ARCHITECT:  
**StudioGallos Architecture**  
DEVELOPER:  
**Hi-Tower**  
BUILDING TYPE:  
**Educational Building**  
PROJECT SIZE:  
**22,000 SQFT**



# FACTORY RETROFIT

The Factory Retrofit transformed the exterior of an industrial building with a gradient of white and grey-colored BIPV panels. **With an 80kW system size, the building's new facade meets the high energy demands of the building while enhancing the aesthetics of the envelope.** The new facade panels meet all fire testing requirements, including NFPA 285 and EN 13501-1, with a classification of A2-s1,d0. The white and grey panels are all active solar panels with seamless energy generation, qualifying the building for government rebates.



**WHITE**  
⚡ Solar Solid Color



**POLARIS**  
⚡ Solar Solid Color



**CUSTOM GREY**  
⚡ Solar Solid Color



**CUSTOM MIDDLE GREY**  
⚡ Solar Solid Color



**CUSTOM DARK GREY**  
⚡ Solar Solid Color

BUILDING TYPE:  
**Office Building**  
PROJECT SIZE:  
**10,000 SQFT**  
POWER OUTCOME:  
**80kW**





# 554 EAST 82ND STREET

554 East 82nd St, Manhattan, New York, USA

The boutique-style luxury apartments at 554 East 82nd Street in Manhattan boast an architecturally impressive facade. **The Cladify rainscreen cladding system enhances the facade's aesthetic, utilizing meticulously crafted Indiana Limestone panels with stone ledge returns for a substantial and imposing look.** The implementation of a high-performance rainscreen system and thermally broken brackets has improved the overall energy efficiency of the building, reducing reliance on mechanical cooling and heating systems.



INDIANA  
Limestone

ARCHITECT:  
**Vail Associates Architects**  
DEVELOPER:  
**Michael Paul Enterprises**  
BUILDING TYPE:  
**Residential Building**



# ROCKET CONDO

36 Tippett Rd. North York, Ontario, Canada

Our innovative lightweight cladding solution allowed Metropia and GH3 Architects to integrate our granite facing into the window wall application directly. We eliminated the need for additional structural support and significantly reduced the installation time. All panels are attached to vertical mullions.



GRIGIO SARDO SANDBLASTED  
Granite

ARCHITECT:  
**gh3 Architects**  
DEVELOPER:  
**Metropia**  
BUILDING TYPE:  
**Residential / Office Building**



# INNOVATION COMPLEX ROTUNDA, University Of Toronto

1833 Inner Cir Rd, Mississauga, Ontario, Canada

A major expansion of the former Kaneff Centre, the Innovation Complex is a new gateway to the University of Toronto Mississauga campus. The university's study space complex is a high-traffic area, requiring durable and easily replaceable interior panels. **Cladify provides the ideal solution by combining durability with ease of replacement.** Moreover, we incorporated a curved stone design to enhance the overall aesthetic.



ESCARPMENT GREY  
Limestone

ARCHITECT:  
**Moriyama & Teshima Architects**  
DEVELOPER:  
**PCL**  
BUILDING TYPE:  
**Educational Building**





# PAPE STATION

743 Pape Ave, Toronto, Ontario, Canada

TTC stations are high-traffic areas, necessitating the use of durable and easily replaceable panels for both the interior and exterior. Cladify offered the ideal solution by seamlessly combining durability and ease of replacement. **Our innovative cladding solution with the facing material supplied via OSI developed for Pape Station in Toronto, Canada, modernized both the exterior and interior (platform wall) of the structure.**



**SUPERFICIE BLANC**  
Porcelain



ARCHITECT:  
**IBI Group Architects**  
BUILDING TYPE:  
**Public-use**

# AL-TAWHEED ISLAMIC CENTER

984 West Side Ave, Jersey City, NJ, USA

The Al-Tawheed Center, an Islamic center situated in New Jersey, serves as a gathering place for Muslims to engage in prayer. **Employing the innovative Cladify panel system, the project combines the use of natural stone and meticulously CNC-curved panels to introduce bronze metal panels, resulting in a remarkable and distinctive facade detail.** The lightweight nature of these panels contributes to structural efficiency and overall cost savings.



**NERO PEARLA**  
Granite



**BRONZE**  
Metal



**SILVER**  
Travertine

ARCHITECT:  
**GRO Architect PLLC**  
DEVELOPER:  
**Al Tawheed Center Inc.**  
BUILDING TYPE:  
**Religious Building**



# PIVOT CONDO YONGE & SHEPPARD

35 Greenfield Ave, North York, Ontario, Canada

Yonge Sheppard Centre, a 1970s-era complex in North York City Centre, underwent a remarkable four-year transformation spearheaded by RioCan Living, named "Pivot." **The Cladify rainscreen system with Nero pearl granite facing elevated the surroundings and added sophistication.** It left a lasting impression on visitors, creating a premium urban living experience at the iconic Toronto intersection.



**NERO PEARLA**  
Granite

ARCHITECT:  
**BDP Quadrangle**  
DEVELOPER:  
**RioCan Living and KingSett Capital**  
BUILDING TYPE:  
**Residential Building**





# BRUNELLO CUCINELLI

108 Yorkville Ave, Toronto, Ontario, Canada

Brunello Cucinelli's flagship store in Toronto's upscale Yorkville neighborhood embodies meticulous craftsmanship and the brand's dedication to quality. The exterior design reflects Cucinelli's core principles of excellence with elemental shapes, white Carrera marble, black aluminum frames, and modern lighting, elegantly blending into Yorkville's opulent retail scene.

**The intricate design was achieved using the Cladify panel system, combining complexity with elegant simplicity.**



**CARRERA**  
Marble

ARCHITECT:  
**Audux**  
DEVELOPER:  
**Gillam Group**  
BUILDING TYPE:  
**Luxury Retail**



# GUCCI STORE

130 Bloor St W, Toronto, Ontario, Canada

The Gucci flagship store at 130 Bloor Street West in Toronto seamlessly blends traditional and modern design, showcasing Gucci's contemporary luxury and eclecticism. The store's exterior features innovative Cladify marble, creating a rich and inviting atmosphere through a harmonious mix of glass and stone. Meticulous stone selection, particularly Calacatta oro marble, ensures a refined and opulent appearance, with **consistent elegant patterns and minimal deviations achieved by Cladify's 5-millimeter stone-facing layer for a flawless book-matching effect.**



CALACATTA ORO  
Marble

ARCHITECT:  
**Dk.Studio**  
DEVELOPER:  
**Amachris**  
BUILDING TYPE:  
**Luxury Retail**





# NOVUS APARTMENTS

11+25 Ordnance St, Toronto, Ontario, Canada

Cladify panels were used in Novus at Garrison Point, a rental residential tower in Toronto's Liberty Village/Ordnance Triangle. The innovative rain-screen system featured factory-assembled modules using Natural Algonquin Limestone and Nero Pearla Granite. The panel size was carefully managed with fake reveals during fabrication, streamlining installation and improving the panel layout quality, resulting in an efficient and aesthetically pleasing integration.

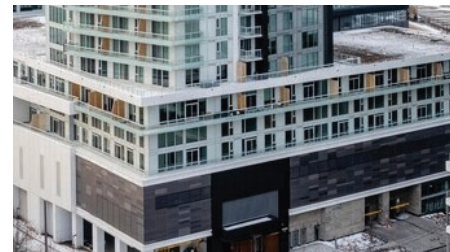


**ALGONQUIN**  
Limestone



**NERO PEARLA**  
Granite

ARCHITECT:  
**Hariri Pontarini Architects**  
DEVELOPER:  
**BentallGreenOak**  
BUILDING TYPE:  
**Residential Building**  
PROJECT SIZE:  
**24,000SQFT**





# ONGOING & UPCOMING PROJECTS



# WILFRID LAURIER UNIVERSITY FACULTY OF MUSIC

75 University, Waterloo, Ontario, Canada

The 3-story addition of the building highlights the beauty of Eramosa limestone. The unique panel layout and staggered joint arrangement create a distinctive look. The transition from facade to soffits panels adds visual rhythm. **The Cladify Rainscreen system improves energy efficiency with thermally broken bracket systems and thicker insulation.** It also saves costs during construction due to its lightweight nature and increased stud spacing. The cladding panel system offers improved reflective acoustical properties, resulting in a quieter and more comfortable interior space.



ERAMOSIA  
Marble

ARCHITECT:  
**CS&P Architects**  
DEVELOPER:  
**D.Grant Construction**  
BUILDING TYPE:  
**Educational Building**



# 1451 WELLINGTON, OTTAWA

1451 Wellington, Ottawa, Ontario, Canada

Ottawa is a hub for luxurious developments, and a standout project at 1451 Wellington St exemplifies luxury, class, and prestige. The building's meticulous attention to detail requires a robust cladding system, and the Cladify pre-assembled system with a Bronze coating simplifies the realization of intricate elements. Modules are manufactured off-site and transported for easy installation, enhancing the design's quality. Sustainability is also a priority, with an angled facade designed to maximize energy generation from integrated solar panels.

**The Mitrex panels seamlessly blend with the design, generating 94 kW of renewable energy.**



CUSTOM COLOR  
Solar Solid Color

ARCHITECT:  
**IBI Group**  
DEVELOPER:  
**Mizrahi Developments**  
BUILDING TYPE:  
**Residential Building**  
PROJECT SIZE:  
**28,886 SQFT**  
POWER OUTCOME:  
**94 kW**





# ST. CLEMENTS PRIVATE SCHOOL

21 St. Clements Ave, Toronto, Ontario, Canada

The St. Clements School Expansion combines aesthetics and function. It features a transition from a robust Nero Assoluto granite base to elegant Eramosa Limestone upper stories. **The innovative Cladify Rainscreen cladding system seamlessly integrates the materials, providing a lightweight option with flexible design possibilities. It incorporates thermal breaks to enhance energy efficiency and create a comfortable indoor environment.** The expansion embodies the synergy of design simplicity, advanced building technologies, and the spirit of learning.



ALGONQUIN  
Limestone



IMPERIAL BLACK  
Granite

ARCHITECT:  
**CS&P Architects**  
DEVELOPER:  
**Prodigy Group**  
BUILDING TYPE:  
**Educational Building**



# WESTERN UNIVERSITY

## ENTREPRENEURSHIP & INNOVATION CENTRE

Western Rd, London, Ontario, Canada

Western University Entrepreneurship & Innovation Centre in London, Ontario, Canada, is committed to sustainability and innovation. For this building, designed by Perkins & Will and developed by Hayman, **Cladify will supply our innovative cladding solution in Buff Indiana Limestone color, allowing for a fast and hassle-free installation** along with an improved aesthetics of the structure.



**BUFF INDIANA**  
Limestone

ARCHITECT:  
**Perkins & Will**  
DEVELOPER:  
**Hayman Construction**  
BUILDING TYPE:  
**Educational Building**  
PROJECT SIZE:  
**44,000 SQFT**



# HYATT HOUSE HOTEL

184 Spadina Ave, Toronto, Ontario, Canada

Hyatt House Hotel is an upcoming project of a 15-storey hotel designed by Sweeny & Co Architects for Manga Hotels on the west side of Spadina Avenue, north of Queen Street West in Toronto, Canada. We will supply our lightweight Pre-fab wall system to minimize the installation time and costs. **With our solar cladding installation in a solid color Cinzento, the system will generate 171 kW of power outcome supplementing the building's energy needs.**

**Note:** The images illustrate the West elevation with Porcelain cladding. East, North, and South elevations feature Solar and Aluminum cladding.



**CINZENTO**  
Solar Solid Color

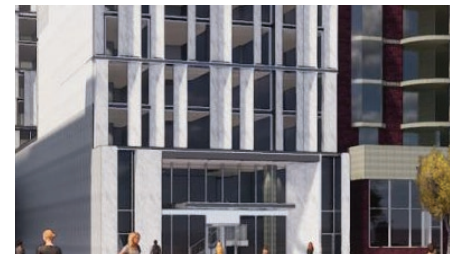


**PURE WHITE**  
Porcelain



**ALUMINUM WHITE**  
Metal

ARCHITECT:  
**Sweeny & Co**  
DEVELOPER:  
**Manga Hotels**  
BUILDING TYPE:  
**Hotel Building**  
PROJECT SIZE:  
**41,931 SQFT**  
POWER OUTCOME:  
**171 kW**





# 18 QUEEN ST, KINGSTON

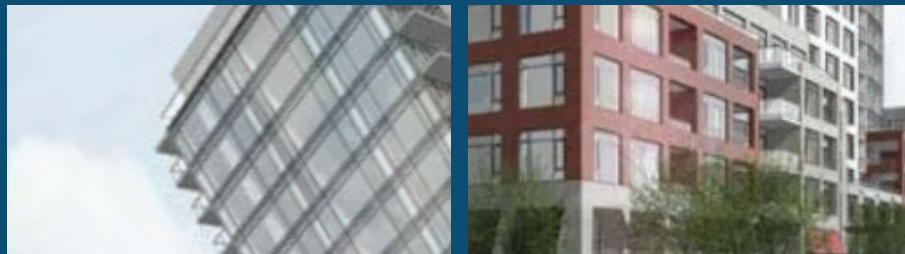
18 Queen St, Kingston, Ontario, Canada

This mixed-use development combines 153 high-end apartments, a modern office, and prime retail space. By incorporating our solar cladding installation in a Cinzento solid color in this project, **the system will produce a power outcome of 50 kW, effectively supporting the energy requirements of the building and adding an aesthetic appeal.**



CINZENTO  
Solar Solid Color

ARCHITECT:  
**RLA Architecture**  
DEVELOPER:  
**Homestead Land Holdings**  
BUILDING TYPE:  
**Residential / Office Building**  
PROJECT SIZE:  
**5,973 SQFT**  
POWER OUTCOME:  
**50kW**



# 591 FINCH WEST

591 Finch West, Toronto, Ontario, Canada

Mitrex will supply an innovative BIPV solution for a 12-storey long-term care residential building in Toronto, Canada, developed by Sionito Community Development Corporation. **Our system will consist of solar cladding designed in a Dark Blue solid color and solar railing, providing power outcomes of 350 kW and 11 kW respectively.**



ARCHITECT:  
**Paradigm Architecture + Design**

DEVELOPER:  
**Sionito Group**

BUILDING TYPE:  
**Long Term Care Residential Building**

PROJECT SIZE:  
**50,432 SQFT**  
**2,360 LFT**

POWER OUTCOME:  
**350kW Cladding, 11kW Railing**



# CAPITAL TOWERS

10028 106 Ave Northwest, Edmonton, Alberta, Canada

This project involves a complete **Building Integrated Photovoltaic (BIPV) cladding retrofit with a unique custom image artwork mural.** The initiative is closely coordinated with the Canadian Infrastructure Bank, which provides financing specifically for retrofit projects in Edmonton aimed at achieving a significant 50% reduction in greenhouse gas (GHG) emissions.

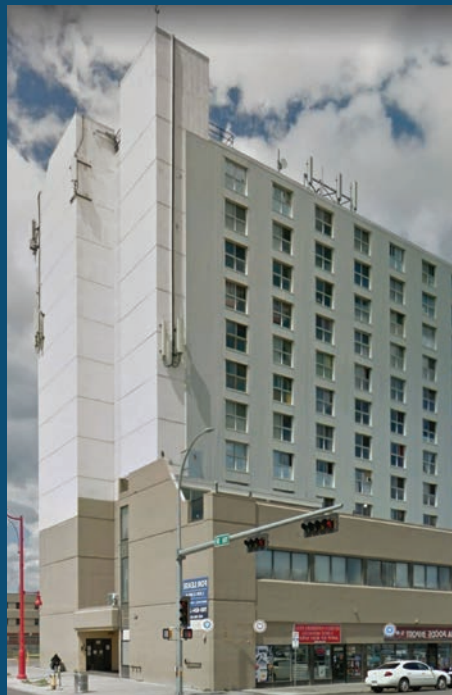


**CARBO**  
Solar Granite



**CUSTOM MURAL**  
Solar Solid Colors

ARCHITECT:  
**MBC Group**  
DEVELOPER:  
**Avenue Living/Logyx Solutions**  
BUILDING TYPE:  
**Residential Retrofit**  
PROJECT SIZE:  
**34,564 SQFT**  
POWER OUTCOME:  
**330kW**





# MAYFAIR MANOR

407 5 Ave SE, Medicine Hat, Alberta, Canada

An apartment building in Alberta, Canada, will be retrofitted with Mitrex's innovative Building-Integrated Solar Technology (BIPV) in multiple colors: Granite Carbo and several vibrant solid colors. **The entire system will modernize the look of the building improving the aesthetics and provide 300 kW of power outcome** to generate clean energy supplementing the electricity needs of the building.

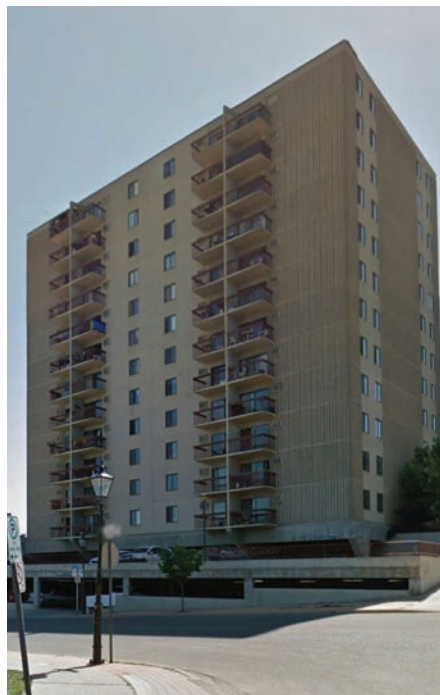


GRANITE CARBO  
Solar Granite



CUSTOM COLOURS  
Solar Solid Colors

ARCHITECT:  
**MTA Urban Design Architects**  
DEVELOPER:  
**Avenue Living**  
BUILDING TYPE:  
**Residential Retrofit**  
PROJECT SIZE:  
**30,534 SQFT**  
POWER OUTCOME:  
**300kW**



# 591 SHERBOURNE

591 Sherbourne, Mississauga, Ontario, Canada

591 Sherbourne is a remarkable 51-story tower in the city of Mississauga. Its design seamlessly blends with neighboring structures, showcasing meticulous attention to detail. The unique aesthetic extends from the podium floors to the tower, deviating from conventional glass box designs. **The Cladify prefab system, with its patina finish and thermal properties, fulfills the architectural vision and enhances constructibility.** The modular installation techniques and internal panel installation have resulted in significant cost savings, eliminating the need for a backup wall system and reducing construction time by 20% without compromising the design.



CUSTOM COLOR  
Solar Solid Colour

ARCHITECT:  
**Arcadis**  
DEVELOPER:  
**Medallion Corporation**  
BUILDING TYPE:  
**Mixed-Use, Residential Building**  
PROJECT SIZE:  
**75,000 SQFT**



# 10 PRINCE ARTHUR

10 Prince Arthur, Toronto, Ontario, Canada

Cladify will supply sustainable cladding to this gorgeous 7-storey residential building in Toronto, Canada. The design selected for the project – Eramosa Marble – will enhance the building's aesthetics with its sleek appeal. **This lightweight system allows for efficient and hassle-free installation, minimizing any disruptions to the project.**



**ERAMOSA**  
Marble



**INDIANA LIMESTONE**  
Natural Stone

ARCHITECT:  
**Richard Wengle Architects**  
DEVELOPER:  
**Accell Construction Management**  
BUILDING TYPE:  
**Residential Building**  
PROJECT SIZE:  
**2,870 SQFT**





# ST. MARY'S UNIVERSITY - LOYOLA RESIDENCE

St. Mary's University, Halifax, Nova Scotia

St. Mary's University in Halifax is taking a leadership role by adopting a sustainable option for the building's modernization efforts. **The installation consists of over 6,000 SQFT of solar cladding accented by a vertical semi-opaque curtain wall on the south elevation.** The design of the panels will be a delicate combination of school colors with a subtle reveal of solar technology – a perfect blend of traditional and modern elements.



**CUSTOM PATTERN**  
Solar Solid Color



**SEMI-OPAQUE GLASS**  
Solar Glass

ARCHITECT:  
**DSRA Architects**  
DEVELOPER:  
**St. Mary's University**  
BUILDING TYPE:  
**University Student Residence**  
POWER OUTCOME:  
**Cladding Power: 94kW**  
**IGU & Spandrel Power: 2.2kW**



# 481 UNIVERSITY

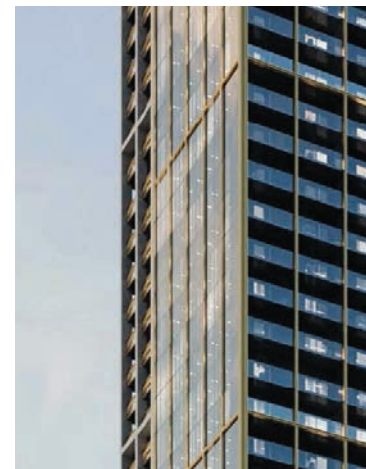
481 University Ave, Toronto, Ontario, Canada

The United Building, developed by Davpart Inc., stands as the tallest heritage preservation project in North America. The outcome will be a remarkable mixed-use high-rise at 481 University Ave in Toronto, Canada, spanning 52 stories, offering a diverse range of features and amenities. For this project, **Cladify will supply lightweight Hope Bay Limestone cladding, applying it to vertical free-standing columns, that will enhance the aesthetics of this inspiring building.**



HOPE BAY  
Limestone

ARCHITECT:  
**B+H Architects**  
DEVELOPER:  
**Davpart Inc.**  
BUILDING TYPE:  
**Residential Building**  
PROJECT SIZE:  
**124,451 SQFT**



# 64 BATHURST ST.

64 Bathurst St., Toronto, Ontario, Canada

Toronto is seeing new architectural projects inspired by Danish design principles in collaboration with the renowned Copenhagen-based firm 3XN. Notably, at 64 Bathurst Street, a prominent development showcases distinctive triangular fins, creating a visually striking and unique design. **The building's commitment to craftsmanship and precision is evident through the use of the Cladify panel system, which captures intricate details on the facade.** This pre-assembled system ensures high-quality production and seamless integration with curtain and window wall systems, resulting in a cohesive and aesthetically pleasing design.



**BLANC**  
Porcelain

ARCHITECT:  
**3XN, WZMH Architects**  
DEVELOPER:  
**Hines**  
BUILDING TYPE:  
**Mixed-use / Residential Building**  
PROJECT SIZE:  
**35,000 SQFT**





# 1154 WILSON BALCONY RETROFIT

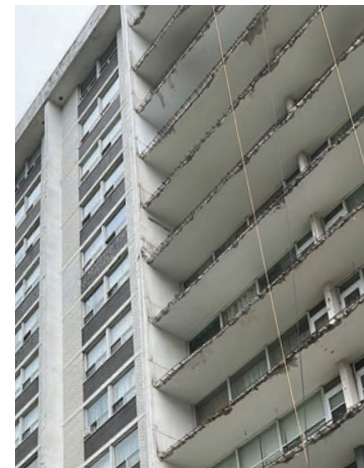
1154 Wilson Ave, Toronto, Ontario, Canada

The 1154 Wilson Balcony Retrofit project is an apartment rental building that will benefit from solar balcony railings supplied by Mitrex and installed by a trusted third-party installer. **With a remarkable power output of 162 KW, the building owner can enjoy long-term energy savings while reducing carbon emissions.** The environmental impact of an energy-generating system of this size over one year will equal planting 1,709 trees.



CUSTOM COLOUR  
Solar Railing

DEVELOPER:  
**Tenblock Development**  
BUILDING TYPE:  
**Residential Building**  
PROJECT SIZE:  
**4,000 LF**  
POWER OUTCOME:  
**162 KW**



# BLOCK 11

25 McMahon Dr., North York, Ontario, Canada

Concord Park Place in North York, developed by Concord Adex, is a growing community along Sheppard Avenue East. One of its latest additions, Block 11 (Saisons), features impressive 18 and 29-story towers. Originally designed with precast panels, they were replaced with the innovative Cladify lightweight preassembled system. This system allowed for meticulous attention to detail, accentuating the sophistication of materials. **The unitized panels were directly attached to the building's structure, eliminating the need for additional support and improving thermal performance, making the structures more energy-efficient.**

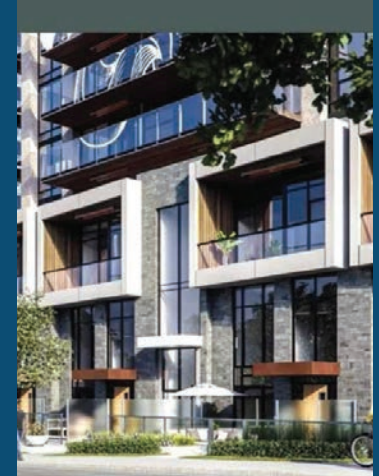


RED BRICK



WHITE PORCELAIN

ARCHITECT:  
**Architecture Unfolded**  
DEVELOPER:  
**Concord Adex**  
BUILDING TYPE:  
**Residential Building**  
PROJECT SIZE:  
**32,000 SQFT**





# THE FOREST HILL CONDOS

859 Eglinton Ave. West, Toronto, Ontario, Canada

The 14-story condominium development sits at Bathurst and Eglinton's coveted southwest corner, featuring an entrance to the Crosstown LRT's Forest Hill Station. It offers exclusive living in Toronto's desirable Forest Hill neighborhood. **The elegant Cladify rainscreen system combines natural granite and marble with distinct architectural elements, streamlining construction and allowing easy installation.** The integrated Louvers provide functional airflow without compromising aesthetics. The lightweight stone panels also facilitate angular soffits installations, saving time and enhancing functionality.



**NERO ASSOLUTO**  
Granite



**BIANCO CARRARA**  
Marble



**WOOD GRAIN**  
Metal

ARCHITECT:  
**BDP Quadrangle**  
DEVELOPER:  
**CentreCourt Developments Inc**  
BUILDING TYPE:  
**Residential Building**  
PROJECT SIZE:  
**24,000 SQFT**





# MITREX & CLADIFY PROJECTS



# FULL MITREX & CLADIFY PROJECTS LIST

Done Projects		
Brand	Project Name	City/Country
Mitrex/Cladify	Mitrex Headquarters	Toronto, ON, Canada
Mitrex	Industrial BIPV Wall	Toronto, ON, Canada
Mitrex	St. Philopateer Orthodox Church	Toronto, ON, Canada
Mitrex	Solar Brick Facade	Toronto, ON, Canada
Mitrex	Midland Courthouse	Toronto, ON, Canada
Mitrex	Minto Sales Office	Oshawa, ON, Canada
Mitrex	Factory Retrofit	Toronto, ON, Canada
Cladify	Aquabella	Toronto, ON, Canada
Cladify	The Shops at Lansdowne Park	Ottawa, ON, Canada
Cladify	Rocket Condo	North York, ON, Canada
Cladify	The Montgomery Square	Toronto, ON, Canada
Cladify	AYC Condo	Toronto, ON, Canada
Cladify	17 King William	Toronto, ON, Canada
Cladify	One Rainsford	Toronto, ON, Canada
Cladify	Collaborative Health Education Building (CHEB), Dalhousie University	Halifax, NS, Canada
Cladify	Fleur Condo	Toronto, ON, Canada
Cladify	Beanfield Centre-Hotel X - Pedestrian Bridge	Toronto, ON, Canada
Cladify	The Westin Hotel	Ottawa, ON, Canada
Cladify	Rise Condo	Toronto, ON, Canada
Cladify	King City Public Library	Toronto, ON, Canada
Cladify	Park Hyatt Toronto	Toronto, ON, Canada
Cladify	Aura Condo	Toronto, ON, Canada
Cladify	19 Bathurst Street	Toronto, ON, Canada
Cladify	Innovation Complex Rotunda, UOT	Mississauga, ON, Canada
Cladify	Yonge and Sheppard Tower	Toronto, ON, Canada
Cladify	10 De Boers	Toronto, ON, Canada
Cladify	TTC Vaughan Station	Vaughan, ON, Canada
Cladify	Pape Station	Toronto, ON, Canada
Cladify	Canadian Mental Health Association (CMHA) Waterloo Wellington	Guelph, ON, Canada
Cladify	Crafthouse at St Andrews	Toronto, ON, Canada
Cladify	Yonge + Rich Condos by Great Gulf	Toronto, ON, Canada
Cladify	127 East 71st Street	New York, NY, USA
Cladify	110-36 69th Road	New York, NY, USA
Cladify	30 Glen Edyth Pl	Toronto, ON, Canada

Done Projects		
Brand	Project Name	City/Country
Cladify	Ordance Street Development - NOVUS	Toronto, ON, Canada
Cladify	2448 Lombard Street Unit 304	San Francisco, CA, USA
Cladify	Beltline Condo	Calgary, AB, Canada
Cladify	Four Seasons Astir Palace	Athens, Greece
Cladify	200 Cumberland Street	Toronto, ON, Canada
Cladify	44 Heath Street East	Toronto, ON, Canada
Cladify	Infinity Trade Feature Wall	Toronto, ON, Canada
Cladify	52 Wooten Way	North Markham, ON, Canada
Cladify	554 East 82nd Street	New York, NY, USA
Cladify	1130 Morrison Heights Drive	Oakville, ON, Canada
Cladify	Horsham Avenue	North York, ON, Canada
Cladify	30th Avenue	San Francisco, CA, USA
Cladify	E2 Condos, Roehampton Road	Toronto, ON, Canada
Cladify	The PUHUI	China
Cladify	357 King West	Toronto, ON, Canada
Cladify	Cumberland Tower	Toronto, ON, Canada
Cladify	Residences of 488 University Avenue	Toronto, ON, Canada
Cladify	1247 38th Street	Brooklyn, NY, USA
Cladify	984 West Side Avenue	Jersey City, NJ, USA
Cladify	230 East 63rd Street	Manhattan, NY, USA
Cladify	Al-Tawheed Islamic Center	Jersey City, NJ, USA
Cladify	Pivot Condo	North York, ON, Canada

# FULL MITREX & CLADIFY PROJECTS LIST

Ongoing & Upcoming Projects		
Brand	Project Name	City/Country
Cladify	Wilfrid Laurier University Faculty of Music	Waterloo, ON, Canada
Cladify	St. Clements Private School	Toronto, ON, Canada
Cladify	Western University Entrepreneurship & Innovation Centre	London, ON, Canada
Cladify	10 Prince Arthur	Toronto, ON, Canada
Mitrex/Cladify	1451 Wellington	Ottawa, ON, Canada
Mitrex/Cladify	Hyatt House Hotel	Toronto, ON, , Canada
Mitrex	558 Communipaw	Jersey City, New Jersey, USA
Mitrex	18 Queen Street	Kingston, ON, Canada
Mitrex	591 Finch	Toronto, ON, Canada
Mitrex/Cladify	Capital Towers	Edmonton, AB, Canada
Mitrex	Mayfair Manor	Medicine Hat, AB, Canada
Mitrex	CCTV Factory	Egypt
Mitrex	The SEE Institute	Dubai, UAE
Mitrex	St. Mary's University Loyola Residence	Halifax, NS, Canada
Mitrex	1154 Wilson Balcony Retrofit	Toronto, ON, Canada
Mitrex	551 Avonhead Building A	Mississauga, ON, Canada
Cladify	591 Sherbourne	Toronto, ON, Canada
Cladify	Harwood & Bayly Phase 2	Ajax, ON, Canada
Cladify	481 University	Toronto, ON, Canada
Cladify	64 Bathurst Street	Toronto, ON, Canada
Cladify	The Foresthill Condos	Toronto, ON, Canada
Cladify	Block 11	North York, ON, Canada



# SUSTAINABLE FACADES


## Learn More:

 [mitrex.com](https://mitrex.com)

 [cladify.com](https://cladify.com)

 [info@mitrex.com](mailto:info@mitrex.com)

 [info@cladify.com](mailto:info@cladify.com)

 +1 (855) 254 0214 (Toll Free)


## Headquarters:

 41 Racine Rd, Toronto,  
ON M9W 2Z4, Canada

 +1 (416) 497 7120


## West USA Office:

 10880 Wilshire Blvd Suite 1101,  
Los Angeles, CA 90024, USA

 +1 (323) 301 7978

## East USA Office:

 1 Rockefeller Plaza Fl 11,  
New York, NY 10020, USA

 +1 (646) 583 4486

 MITREX™

 Cladify™